

Cabinet 22UR



Deep and Single

Description

The Optronics 22UR Rack Cable Management Cabinet features and all steel, welded frame construction that provides durable, high quality rack storage, designed to housing any standard 19" rack mount equipment, as well as to manage and protect the network system.

The Optronics 22UR cabinet is ideally designed to suit any server room, as it holds removable panels on its top and bottom, to allow the entrance of cabling, and avoiding additional drilling. It also holds two side removable panels to ease the installation and maintenance of equipments.

The Optronics 22UR cabinet features two configurations: Single and Deep. This last feature allows wider device installation or a greater area for cable management.

Available in two versions: the Toughened Glass Door, which enables the vision of inside the cabinet without open it, and the Steel Mesh Door, to optimize ventilation that helps keep the inside of the cabinet fresh.

Both door options are keyed locked, two keys included.

The rear door is also solid steel with ventilation slots to help assist with rack ventilation and equipment optimal performance.



Specifications

Deep cabinet	Packing dimensión	670 x 1070 x 1196 mm
	Width: 600 mm	
	Depth: 1000 mm	
	Height: 1166 mm	
Single cabinet	Packing dimensión	670 x 670 x 1196mm
	Width: 600 mm	
	Depth: 600 mm	
	Height: 1166 mm	
Cabinet material	SPCC cold rolled steel	
Front door	Toughened glass	
Rear door	SPCC with ventilation	
Rear door	Hexagonal hole for ventilation	
Side panel	2 pieces. Easy to install, removable to ease maintain	
Mounting profile	2 pieces numbered	
Mounting profile thickness	2.0 mm	
Mounting profile material	SPCC, blue zinc surface finish	
Mounting angle	2 piezas	
Mounting angle thickness	1.5 mm	
Thickness, other materials	1.2 mm	
Frame	28 x 120 x 1900 mm	
Heavy duty castor	4 pieces, diameter 2"	
Surface finish	Degreasing, phosphoric, powder coated fosfórico.	
Surface color	RAL 9004	
Degree of protection	IP20	
Load capacity	150 Kg	
Standard	ANSI/EIA RS-310-D, IEC 297-2, DIN 41494-1, DIN 41494-7, ETSI.	

Accessories

- M6 B-head screw
- M6 square nut
- Allen wrench
- M12 adjustable feet

Additional Accessories, not included

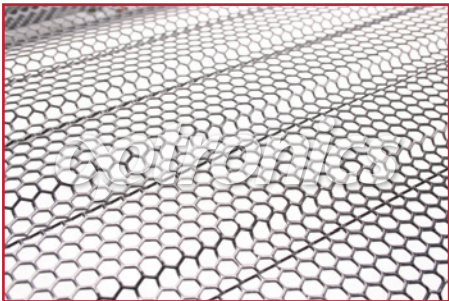
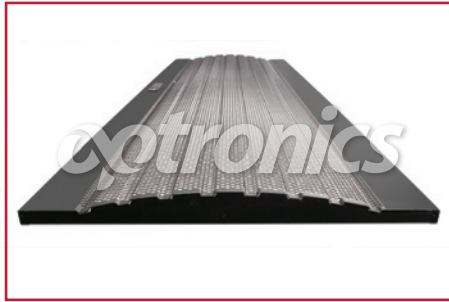
- 19" power strip, with 3 double plug
120 – 240 VCA 10a, 1.8m cable length
- fan kit, 120 VCA 60Hz
- 1 fluorescing tube lighting kit, 120 VCA 60Hz
- Fixed or slide trays, SPCC cold steel T1.2 / 14"
- Horizontal cable Organizer

Cabinet 22UR



Deep and Single

Steel mesh door



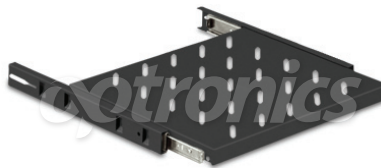
Toughened glass door



Additional Accessories, not included



2 double fan kit, 120VCA 60Hz



Slide trays



Power strip



Fluorescing tube lighting kit



Horizontal cable Organizer